

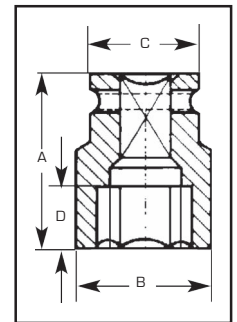
## IS - IMPERIAL IMPACT SOCKETS



Square drives from  $\frac{3}{4}$ " to  $2\frac{1}{2}$ "

Across flat sizes up to  $6\frac{7}{8}$ "

Supplied complete with retaining ring and pin



Hi-Force high quality imperial size impact sockets are designed and manufactured for use with all Hi-Force bolting products, including hydraulic torque wrenches and impact wrenches. The IS range offers 47 models, with square drives from  $\frac{3}{4}$ " to  $2\frac{1}{2}$ " and across flat sizes up to  $6\frac{7}{8}$ ". Long length, bi-hexagonal and special sockets are available on request.

| Model number | Square drive     | Nut AF inches      | Dimensions in mm |     |    |    |
|--------------|------------------|--------------------|------------------|-----|----|----|
|              |                  |                    | A                | B   | C  | D  |
| IS2-101      | $\frac{3}{4}$ "  | $1\frac{1}{16}$ "  | 52               | 40  | 38 | 16 |
| IS2-104      | $\frac{3}{4}$ "  | $1\frac{1}{4}$ "   | 52               | 44  | 44 | 20 |
| IS2-107      | $\frac{3}{4}$ "  | $1\frac{7}{16}$ "  | 56               | 51  | 44 | 23 |
| IS2-110      | $\frac{3}{4}$ "  | $1\frac{5}{8}$ "   | 62               | 58  | 44 | 27 |
| IS2-113      | $\frac{3}{4}$ "  | $1\frac{13}{16}$ " | 68               | 67  | 44 | 32 |
| IS2-200      | $\frac{3}{4}$ "  | 2"                 | 72               | 71  | 54 | 35 |
| IS2-203      | $\frac{3}{4}$ "  | $2\frac{3}{16}$ "  | 74               | 77  | 54 | 35 |
| IS2-206      | $\frac{3}{4}$ "  | $2\frac{3}{8}$ "   | 75               | 84  | 54 | 35 |
| IS9-101      | 1"               | $1\frac{1}{16}$ "  | 58               | 44  | 51 | 17 |
| IS9-104      | 1"               | $1\frac{1}{4}$ "   | 60               | 51  | 51 | 21 |
| IS9-107      | 1"               | $1\frac{7}{16}$ "  | 62               | 56  | 52 | 26 |
| IS9-110      | 1"               | $1\frac{5}{8}$ "   | 62               | 62  | 52 | 26 |
| IS9-113      | 1"               | $1\frac{13}{16}$ " | 64               | 68  | 58 | 27 |
| IS9-200      | 1"               | 2"                 | 70               | 74  | 58 | 31 |
| IS9-203      | 1"               | $2\frac{3}{16}$ "  | 72               | 80  | 62 | 32 |
| IS9-206      | 1"               | $2\frac{3}{8}$ "   | 78               | 87  | 62 | 35 |
| IS9-209      | 1"               | $2\frac{9}{16}$ "  | 80               | 93  | 62 | 36 |
| IS9-212      | 1"               | $2\frac{3}{4}$ "   | 85               | 98  | 62 | 40 |
| IS9-215      | 1"               | $2\frac{15}{16}$ " | 95               | 104 | 86 | 48 |
| IS9-302      | 1"               | $3\frac{1}{8}$ "   | 100              | 109 | 86 | 52 |
| IS9-308      | 1"               | $3\frac{1}{2}$ "   | 105              | 125 | 86 | 52 |
| IS9-314      | 1"               | $3\frac{7}{8}$ "   | 105              | 136 | 95 | 52 |
| IS5-113      | $1\frac{1}{2}$ " | $1\frac{13}{16}$ " | 84               | 76  | 86 | 27 |
| IS5-200      | $1\frac{1}{2}$ " | 2"                 | 87               | 82  | 86 | 29 |

| Model number | Square drive     | Nut AF inches      | Dimensions in mm |     |     |     |
|--------------|------------------|--------------------|------------------|-----|-----|-----|
|              |                  |                    | A                | B   | C   | D   |
| IS5-203      | $1\frac{1}{2}$ " | $2\frac{3}{16}$ "  | 90               | 86  | 86  | 36  |
| IS5-206      | $1\frac{1}{2}$ " | $2\frac{3}{8}$ "   | 92               | 93  | 86  | 38  |
| IS5-209      | $1\frac{1}{2}$ " | $2\frac{9}{16}$ "  | 95               | 97  | 86  | 40  |
| IS5-212      | $1\frac{1}{2}$ " | $2\frac{3}{4}$ "   | 100              | 105 | 86  | 43  |
| IS5-215      | $1\frac{1}{2}$ " | $2\frac{15}{16}$ " | 103              | 110 | 86  | 45  |
| IS5-302      | $1\frac{1}{2}$ " | $3\frac{1}{8}$ "   | 110              | 116 | 86  | 50  |
| IS5-308      | $1\frac{1}{2}$ " | $3\frac{1}{2}$ "   | 118              | 130 | 86  | 55  |
| IS5-314      | $1\frac{1}{2}$ " | $3\frac{7}{8}$ "   | 125              | 140 | 95  | 58  |
| IS5-404      | $1\frac{1}{2}$ " | $4\frac{1}{4}$ "   | 125              | 150 | 95  | 58  |
| IS5-410      | $1\frac{1}{2}$ " | $4\frac{5}{8}$ "   | 135              | 165 | 95  | 65  |
| IS5-500      | $1\frac{1}{2}$ " | 5"                 | 140              | 179 | 127 | 70  |
| IS5-506      | $1\frac{1}{2}$ " | $5\frac{3}{8}$ "   | 150              | 195 | 127 | 75  |
| IS6-302      | $2\frac{1}{2}$ " | $3\frac{1}{8}$ "   | 140              | 124 | 127 | 51  |
| IS6-308      | $2\frac{1}{2}$ " | $3\frac{1}{2}$ "   | 140              | 135 | 127 | 51  |
| IS6-314      | $2\frac{1}{2}$ " | $3\frac{7}{8}$ "   | 150              | 147 | 127 | 57  |
| IS6-404      | $2\frac{1}{2}$ " | $4\frac{1}{4}$ "   | 160              | 159 | 127 | 64  |
| IS6-410      | $2\frac{1}{2}$ " | $4\frac{5}{8}$ "   | 170              | 172 | 127 | 71  |
| IS6-500      | $2\frac{1}{2}$ " | 5"                 | 175              | 185 | 127 | 75  |
| IS6-506      | $2\frac{1}{2}$ " | $5\frac{3}{8}$ "   | 180              | 197 | 127 | 79  |
| IS6-512      | $2\frac{1}{2}$ " | $5\frac{3}{4}$ "   | 185              | 210 | 127 | 83  |
| IS6-602      | $2\frac{1}{2}$ " | $6\frac{1}{8}$ "   | 190              | 223 | 127 | 91  |
| IS6-608      | $2\frac{1}{2}$ " | $6\frac{1}{2}$ "   | 195              | 235 | 127 | 95  |
| IS6-614      | $2\frac{1}{2}$ " | $6\frac{7}{8}$ "   | 200              | 248 | 127 | 105 |

J

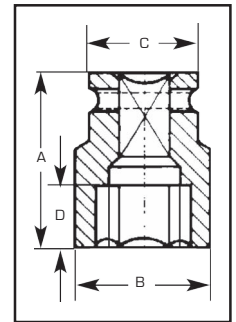
## MS - METRIC IMPACT SOCKETS



Square drives from 3/4" to 2 1/2"

Across flat sizes up to 145mm

Supplied complete with retaining ring and pin



Hi-Force high quality metric size impact sockets are designed and manufactured for use with all Hi-Force bolting products, including hydraulic torque wrenches and impact wrenches. The MS range offers 53 models, with square drives from 3/4" to 2 1/2" and across flat sizes up to 145mm. Long length, bi-hexagonal and special sockets are available on request.

| Model number | Square drive | Nut AF mm | Dimensions in mm |     |    |    |
|--------------|--------------|-----------|------------------|-----|----|----|
|              |              |           | A                | B   | C  | D  |
| MS2-24       | 3/4"         | 24        | 50               | 39  | 44 | 16 |
| MS2-27       | 3/4"         | 27        | 54               | 43  | 44 | 16 |
| MS2-30       | 3/4"         | 30        | 54               | 47  | 44 | 23 |
| MS2-36       | 3/4"         | 36        | 56               | 54  | 44 | 23 |
| MS2-41       | 3/4"         | 41        | 58               | 60  | 44 | 24 |
| MS2-46       | 3/4"         | 46        | 63               | 67  | 44 | 30 |
| MS2-50       | 3/4"         | 50        | 72               | 71  | 54 | 32 |
| MS2-55       | 3/4"         | 55        | 74               | 78  | 54 | 35 |
| MS2-60       | 3/4"         | 60        | 75               | 84  | 54 | 37 |
| MS9-24       | 1"           | 24        | 58               | 42  | 54 | 17 |
| MS9-27       | 1"           | 27        | 58               | 46  | 54 | 17 |
| MS9-30       | 1"           | 30        | 60               | 50  | 54 | 21 |
| MS9-36       | 1"           | 36        | 65               | 56  | 54 | 30 |
| MS9-41       | 1"           | 41        | 67               | 63  | 54 | 31 |
| MS9-46       | 1"           | 46        | 74               | 69  | 54 | 36 |
| MS9-50       | 1"           | 50        | 80               | 74  | 54 | 42 |
| MS9-55       | 1"           | 55        | 84               | 80  | 54 | 44 |
| MS9-60       | 1"           | 60        | 87               | 86  | 54 | 44 |
| MS9-65       | 1"           | 65        | 90               | 92  | 54 | 46 |
| MS9-70       | 1"           | 70        | 96               | 99  | 54 | 51 |
| MS9-75       | 1"           | 75        | 98               | 106 | 86 | 45 |
| MS9-80       | 1"           | 80        | 100              | 112 | 86 | 48 |
| MS9-85       | 1"           | 85        | 105              | 118 | 86 | 52 |
| MS9-90       | 1"           | 90        | 105              | 125 | 86 | 52 |
| MS9-95       | 1"           | 95        | 115              | 131 | 86 | 52 |
| MS9-100      | 1"           | 100       | 115              | 137 | 95 | 58 |

| Model number | Square drive | Nut AF mm | Dimensions in mm |     |     |    |
|--------------|--------------|-----------|------------------|-----|-----|----|
|              |              |           | A                | B   | C   | D  |
| MS5-41       | 1 1/2"       | 41        | 80               | 70  | 86  | 26 |
| MS5-46       | 1 1/2"       | 46        | 84               | 76  | 86  | 27 |
| MS5-50       | 1 1/2"       | 50        | 87               | 81  | 86  | 29 |
| MS5-55       | 1 1/2"       | 55        | 90               | 86  | 86  | 36 |
| MS5-60       | 1 1/2"       | 60        | 92               | 93  | 86  | 38 |
| MS5-65       | 1 1/2"       | 65        | 95               | 97  | 86  | 40 |
| MS5-70       | 1 1/2"       | 70        | 100              | 105 | 86  | 43 |
| MS5-75       | 1 1/2"       | 75        | 103              | 110 | 86  | 45 |
| MS5-80       | 1 1/2"       | 80        | 110              | 116 | 86  | 50 |
| MS5-85       | 1 1/2"       | 85        | 118              | 125 | 86  | 55 |
| MS5-90       | 1 1/2"       | 90        | 118              | 130 | 86  | 55 |
| MS5-95       | 1 1/2"       | 95        | 118              | 137 | 95  | 55 |
| MS5-100      | 1 1/2"       | 100       | 125              | 140 | 95  | 58 |
| MS5-105      | 1 1/2"       | 105       | 125              | 150 | 95  | 58 |
| MS5-110      | 1 1/2"       | 110       | 125              | 156 | 95  | 58 |
| MS5-115      | 1 1/2"       | 115       | 135              | 160 | 95  | 65 |
| MS5-130      | 1 1/2"       | 130       | 140              | 185 | 127 | 70 |
| MS6-80       | 2 1/2"       | 80        | 140              | 124 | 127 | 51 |
| MS6-85       | 2 1/2"       | 85        | 140              | 130 | 127 | 51 |
| MS6-90       | 2 1/2"       | 90        | 145              | 136 | 127 | 54 |
| MS6-95       | 2 1/2"       | 95        | 145              | 143 | 127 | 54 |
| MS6-100      | 2 1/2"       | 100       | 150              | 149 | 127 | 57 |
| MS6-105      | 2 1/2"       | 105       | 155              | 155 | 127 | 61 |
| MS6-110      | 2 1/2"       | 110       | 160              | 161 | 127 | 64 |
| MS6-115      | 2 1/2"       | 115       | 165              | 167 | 127 | 67 |
| MS6-130      | 2 1/2"       | 130       | 175              | 188 | 127 | 75 |
| MS6-145      | 2 1/2"       | 145       | 185              | 208 | 127 | 83 |



## IB - IMPERIAL HEXAGON REDUCER BUSHES

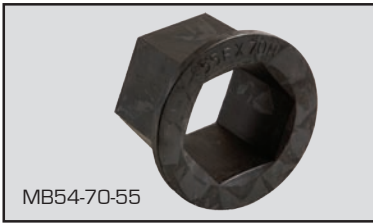


To reduce the female hexagon AF size of the TWH-NRH ratchet heads (see page 85), these Hi-Force imperial hexagon reducer bushes offer an easy and economical solution. Just select your outside AF size (= ratchet head AF size) and the required inside AF size to determine the model number. Please note that wall thickness [specified below as 'W' dimension], must be added to the minimum radius dimension of your ratchet head, when using a reducer bush.

| Outside AF size | Inside AF size | For TWH27NRH |                 | For TWH54NRH |                 | For TWH120NRH |                 | For TWH210NRH |                 | For TWH430NRH |                 |
|-----------------|----------------|--------------|-----------------|--------------|-----------------|---------------|-----------------|---------------|-----------------|---------------|-----------------|
|                 |                | Model number | W <sub>mm</sub> | Model number | W <sub>mm</sub> | Model number  | W <sub>mm</sub> | Model number  | W <sub>mm</sub> | Model number  | W <sub>mm</sub> |
| 1 1/4"          | 1 1/16"        | IB27-104-101 | 2.4             |              |                 |               |                 |               |                 |               |                 |
| 1 7/16"         | 1 1/16"        | IB27-107-101 | 4.8             |              |                 |               |                 |               |                 |               |                 |
| 1 7/16"         | 1 1/4"         | IB27-107-104 | 2.4             |              |                 |               |                 |               |                 |               |                 |
| 1 5/8"          | 1 1/4"         | IB27-110-104 | 4.8             | IB54-110-104 | 4.8             |               |                 |               |                 |               |                 |
| 1 5/8"          | 1 7/16"        | IB27-110-107 | 2.4             | IB54-110-107 | 2.4             |               |                 |               |                 |               |                 |
| 1 13/16"        | 1 7/16"        | IB27-113-107 | 4.8             | IB54-113-107 | 4.8             |               |                 |               |                 |               |                 |
| 1 13/16"        | 1 5/8"         | IB27-113-110 | 2.4             | IB54-113-110 | 2.4             |               |                 |               |                 |               |                 |
| 2"              | 1 5/8"         | IB27-200-110 | 4.8             | IB54-200-110 | 4.8             |               |                 |               |                 |               |                 |
| 2"              | 1 13/16"       | IB27-200-113 | 2.4             | IB54-200-113 | 2.4             |               |                 |               |                 |               |                 |
| 2 3/16"         | 1 5/8"         | IB27-203-110 | 7.2             | IB54-203-110 | 7.2             |               |                 |               |                 |               |                 |
| 2 3/16"         | 1 13/16"       | IB27-203-113 | 4.8             | IB54-203-113 | 4.8             |               |                 |               |                 |               |                 |
| 2 3/16"         | 2"             | IB27-203-200 | 2.4             | IB54-203-200 | 2.4             |               |                 |               |                 |               |                 |
| 2 3/8"          | 1 13/16"       | IB27-206-113 | 7.2             | IB54-206-113 | 7.2             |               |                 |               |                 |               |                 |
| 2 3/8"          | 2"             | IB27-206-200 | 4.8             | IB54-206-200 | 4.8             |               |                 |               |                 |               |                 |
| 2 3/8"          | 2 3/16"        | IB27-206-203 | 2.4             | IB54-206-203 | 2.4             | IB120-206-203 | 2.4             |               |                 |               |                 |
| 2 9/16"         | 2"             |              |                 | IB54-209-200 | 7.2             | not available | -               |               |                 |               |                 |
| 2 9/16"         | 2 3/16"        |              |                 | IB54-209-203 | 4.8             | IB120-209-203 | 4.8             |               |                 |               |                 |
| 2 9/16"         | 2 3/8"         |              |                 | IB54-209-206 | 2.4             | IB120-209-206 | 2.4             |               |                 |               |                 |
| 2 3/4"          | 2 3/16"        |              |                 | IB54-212-203 | 7.2             | IB120-212-203 | 7.2             |               |                 |               |                 |
| 2 3/4"          | 2 3/8"         |              |                 | IB54-212-206 | 4.8             | IB120-212-206 | 4.8             |               |                 |               |                 |
| 2 3/4"          | 2 9/16"        |              |                 | IB54-212-209 | 2.4             | IB120-212-209 | 2.4             |               |                 |               |                 |
| 2 15/16"        | 2 3/8"         |              |                 | IB54-215-206 | 7.2             | IB120-215-206 | 7.2             |               |                 |               |                 |
| 2 15/16"        | 2 9/16"        |              |                 | IB54-215-209 | 4.8             | IB120-215-209 | 4.8             |               |                 |               |                 |
| 2 15/16"        | 2 3/4"         |              |                 | IB54-215-212 | 2.4             | IB120-215-212 | 2.4             | IB210-215-212 | 2.4             |               |                 |
| 3 1/8"          | 2 9/16"        |              |                 | IB54-302-209 | 7.2             | IB120-302-209 | 7.2             | not available | -               |               |                 |
| 3 1/8"          | 2 3/4"         |              |                 | IB54-302-212 | 4.8             | IB120-302-212 | 4.8             | IB210-302-212 | 4.8             |               |                 |
| 3 1/8"          | 2 15/16"       |              |                 | IB54-302-215 | 2.4             | IB120-302-215 | 2.4             | IB210-302-215 | 2.4             |               |                 |
| 3 1/2"          | 2 15/16"       |              |                 |              |                 | IB120-308-215 | 7.2             | IB210-308-215 | 7.2             |               |                 |
| 3 1/2"          | 3 1/8"         |              |                 |              |                 | IB120-308-302 | 4.8             | IB210-308-302 | 4.8             | IB430-308-302 | 4.8             |
| 3 7/8"          | 3 1/8"         |              |                 |              |                 | IB120-314-302 | 9.5             | IB210-314-302 | 9.5             | IB430-314-302 | 9.5             |
| 3 7/8"          | 3 1/2"         |              |                 |              |                 | IB120-314-308 | 4.8             | IB210-314-308 | 4.8             | IB430-314-308 | 4.8             |
| 4 1/4"          | 3 1/2"         |              |                 |              |                 |               |                 | IB210-404-308 | 9.5             | IB430-404-308 | 9.5             |
| 4 1/4"          | 3 7/8"         |              |                 |              |                 |               |                 | IB210-404-314 | 4.8             | IB430-404-314 | 4.8             |
| 4 5/8"          | 3 7/8"         |              |                 |              |                 |               |                 | IB210-410-314 | 9.5             | IB430-410-314 | 9.5             |
| 4 5/8"          | 4 1/4"         |              |                 |              |                 |               |                 | IB210-410-404 | 4.8             | IB430-410-404 | 4.8             |
| 5"              | 4 1/4"         |              |                 |              |                 |               |                 |               |                 | IB430-500-404 | 9.5             |
| 5"              | 4 5/8"         |              |                 |              |                 |               |                 |               |                 | IB430-500-410 | 4.8             |
| 5 3/8"          | 4 5/8"         |              |                 |              |                 |               |                 |               |                 | IB430-506-410 | 9.5             |
| 5 3/8"          | 5"             |              |                 |              |                 |               |                 |               |                 | IB430-506-500 | 4.8             |
| 5 3/4"          | 5"             |              |                 |              |                 |               |                 |               |                 | IB430-512-500 | 9.5             |
| 5 3/4"          | 5 5/8"         |              |                 |              |                 |               |                 |               |                 | IB430-512-506 | 4.8             |
| 6 1/8"          | 5 5/8"         |              |                 |              |                 |               |                 |               |                 | IB430-602-506 | 9.5             |
| 6 1/8"          | 5 3/4"         |              |                 |              |                 |               |                 |               |                 | IB430-602-512 | 4.8             |
| 6 1/2"          | 5 3/4"         |              |                 |              |                 |               |                 |               |                 | IB430-608-512 | 9.5             |
| 6 1/2"          | 6 1/8"         |              |                 |              |                 |               |                 |               |                 | IB430-608-602 | 4.8             |
| 6 7/8"          | 6 1/8"         |              |                 |              |                 |               |                 |               |                 | IB430-614-602 | 9.5             |
| 6 7/8"          | 6 1/2"         |              |                 |              |                 |               |                 |               |                 | IB430-614-608 | 4.8             |



## MB - METRIC HEXAGON REDUCER BUSHES



To reduce the female hexagon AF size of the TWH-NRH ratchet heads (see page 85), these Hi-Force imperial hexagon reducer bushes offer an easy and economical solution. Just select your outside AF size (= ratchet head AF size) and the required inside AF size to determine the model number. Please note that wall thickness [specified below as 'W' dimension], must be added to the minimum radius dimension of your ratchet head, when using a reducer bush.

| Outside AF size | Inside AF size | For TWH27NRH |                 | For TWH54NRH |                 | For TWH120NRH |                 | For TWH210NRH |                 | For TWH430NRH |                 |
|-----------------|----------------|--------------|-----------------|--------------|-----------------|---------------|-----------------|---------------|-----------------|---------------|-----------------|
|                 |                | Model number | W <sub>mm</sub> | Model number | W <sub>mm</sub> | Model number  | W <sub>mm</sub> | Model number  | W <sub>mm</sub> | Model number  | W <sub>mm</sub> |
| 30              | 24             | MB27-30-24   | 3.0             |              |                 |               |                 |               |                 |               |                 |
| 36              | 30             | MB27-36-30   | 3.0             | MB54-36-30   | 3.0             |               |                 |               |                 |               |                 |
| 41              | 36             | MB27-41-36   | 2.5             | MB54-41-36   | 2.5             |               |                 |               |                 |               |                 |
| 46              | 36             | MB27-46-36   | 5.0             | MB54-46-36   | 5.0             |               |                 |               |                 |               |                 |
| 46              | 41             | MB27-46-41   | 2.5             | MB54-46-41   | 2.5             |               |                 |               |                 |               |                 |
| 50              | 41             | MB27-50-41   | 4.5             | MB54-50-41   | 4.5             |               |                 |               |                 |               |                 |
| 50              | 46             | MB27-50-46   | 2.0             | MB54-50-46   | 2.0             |               |                 |               |                 |               |                 |
| 55              | 41             | MB27-55-41   | 7.0             | MB54-55-41   | 7.0             |               |                 |               |                 |               |                 |
| 55              | 46             | MB27-55-46   | 4.5             | MB54-55-46   | 4.5             |               |                 |               |                 |               |                 |
| 55              | 50             | MB27-55-50   | 2.5             | MB54-55-50   | 2.5             |               |                 |               |                 |               |                 |
| 60              | 46             | MB27-60-46   | 7.0             | MB54-60-46   | 7.0             |               |                 |               |                 |               |                 |
| 60              | 50             | MB27-60-50   | 5.0             | MB54-60-50   | 5.0             | MB120-60-50   | 5.0             |               |                 |               |                 |
| 60              | 55             | MB27-60-55   | 2.5             | MB54-60-55   | 2.5             | MB120-60-55   | 2.5             |               |                 |               |                 |
| 65              | 50             |              |                 | MB54-65-50   | 7.5             | MB120-65-50   | 7.5             |               |                 |               |                 |
| 65              | 55             |              |                 | MB54-65-55   | 5.0             | MB120-65-55   | 5.0             |               |                 |               |                 |
| 65              | 60             |              |                 | MB54-65-60   | 2.5             | MB120-65-60   | 2.5             |               |                 |               |                 |
| 70              | 55             |              |                 | MB54-70-55   | 7.5             | MB120-70-55   | 7.5             |               |                 |               |                 |
| 70              | 60             |              |                 | MB54-70-60   | 5.0             | MB120-70-60   | 5.0             |               |                 |               |                 |
| 70              | 65             |              |                 | MB54-70-65   | 2.5             | MB120-70-65   | 2.5             |               |                 |               |                 |
| 75              | 60             |              |                 | MB54-75-60   | 7.5             | MB120-75-60   | 7.5             |               |                 |               |                 |
| 75              | 65             |              |                 | MB54-75-65   | 5.0             | MB120-75-65   | 5.0             |               |                 |               |                 |
| 75              | 70             |              |                 | MB54-75-70   | 2.5             | MB120-75-70   | 2.5             | MB210-75-70   | 2.5             |               |                 |
| 80              | 65             |              |                 | MB54-80-65   | 7.5             | MB120-80-65   | 7.5             | not available | -               |               |                 |
| 80              | 70             |              |                 | MB54-80-70   | 5.0             | MB120-80-70   | 5.0             | MB210-80-70   | 5.0             |               |                 |
| 80              | 75             |              |                 | MB54-80-75   | 2.5             | MB120-80-75   | 2.5             | MB210-80-75   | 2.5             |               |                 |
| 85              | 70             |              |                 |              |                 | MB120-85-70   | 7.5             | MB210-85-70   | 7.5             |               |                 |
| 85              | 75             |              |                 |              |                 | MB120-85-75   | 5.0             | MB210-85-75   | 5.0             |               |                 |
| 85              | 80             |              |                 |              |                 | MB120-85-80   | 2.5             | MB210-85-80   | 2.5             | MB430-85-80   | 2.5             |
| 90              | 75             |              |                 |              |                 | MB120-90-75   | 7.5             | MB210-90-75   | 7.5             | not available | -               |
| 90              | 80             |              |                 |              |                 | MB120-90-80   | 5.0             | MB210-90-80   | 5.0             | MB430-90-80   | 5.0             |
| 90              | 85             |              |                 |              |                 | MB120-90-85   | 2.5             | MB210-90-85   | 2.5             | MB430-90-85   | 2.5             |
| 95              | 80             |              |                 |              |                 | MB120-95-80   | 7.5             | MB210-95-80   | 7.5             | MB430-95-80   | 7.5             |
| 95              | 85             |              |                 |              |                 | MB120-95-85   | 5.0             | MB210-95-85   | 5.0             | MB430-95-85   | 5.0             |
| 95              | 90             |              |                 |              |                 | MB120-95-90   | 2.5             | MB210-95-90   | 2.5             | MB430-95-90   | 2.5             |
| 100             | 85             |              |                 |              |                 | MB120-100-85  | 7.5             | MB210-100-85  | 7.5             | MB430-100-85  | 7.5             |
| 100             | 90             |              |                 |              |                 | MB120-100-90  | 5.0             | MB210-100-90  | 5.0             | MB430-100-90  | 5.0             |
| 100             | 95             |              |                 |              |                 | MB120-100-95  | 2.5             | MB210-100-95  | 2.5             | MB430-100-95  | 2.5             |
| 105             | 90             |              |                 |              |                 |               |                 | MB210-105-90  | 7.5             | MB430-105-90  | 7.5             |
| 105             | 95             |              |                 |              |                 |               |                 | MB210-105-95  | 5.0             | MB430-105-95  | 5.0             |
| 105             | 100            |              |                 |              |                 |               |                 | MB210-105-100 | 2.5             | MB430-105-100 | 2.5             |
| 110             | 95             |              |                 |              |                 |               |                 | MB210-110-95  | 7.5             | MB430-110-95  | 7.5             |
| 110             | 100            |              |                 |              |                 |               |                 | MB210-110-100 | 5.0             | MB430-110-100 | 5.0             |
| 110             | 105            |              |                 |              |                 |               |                 | MB210-110-105 | 2.5             | MB430-110-105 | 2.5             |
| 115             | 100            |              |                 |              |                 |               |                 | MB210-115-100 | 7.5             | MB430-115-100 | 7.5             |
| 115             | 105            |              |                 |              |                 |               |                 | MB210-115-105 | 5.0             | MB430-115-105 | 5.0             |
| 115             | 110            |              |                 |              |                 |               |                 | MB210-115-110 | 2.5             | MB430-115-110 | 2.5             |
| 130             | 105            |              |                 |              |                 |               |                 |               |                 | MB430-130-105 | 12.5            |
| 130             | 110            |              |                 |              |                 |               |                 |               |                 | MB430-130-110 | 10.0            |
| 130             | 115            |              |                 |              |                 |               |                 |               |                 | MB430-130-115 | 7.5             |
| 145             | 110            |              |                 |              |                 |               |                 |               |                 | MB430-145-110 | 17.5            |
| 145             | 115            |              |                 |              |                 |               |                 |               |                 | MB430-145-115 | 15.0            |
| 145             | 130            |              |                 |              |                 |               |                 |               |                 | MB430-145-130 | 7.5             |

J