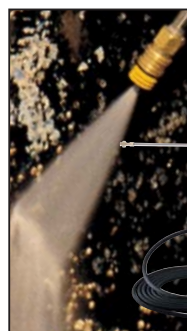


Cold and Hot Water Pressure Washers



Portable Cold Water Pressure Washer

Heavy-Duty Cold Water Pressure Washer

Heavy-Duty Cold Water Pressure Washer

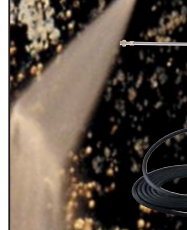
Air Powered Cold Water Pressure Washer

Gasoline Powered Cold Water Pressure Washer

Electric Powered Hot Water Pressure Washer

Gasoline Powered Hot Water Pressure Washer

Gasoline Powered Hot Water Pressure Washer

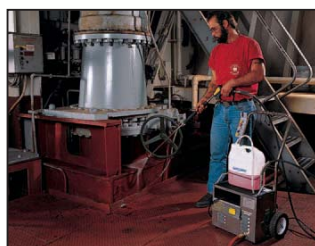


Specifications	GPW-1200	GPW-1000	GPW-1400	GPW-1000-P
Motor/Engine Power:	1.7 HP	1½ HP	1½ HP	Up to 2½ HP
Input Power:	15 Amps, 115 V, 60 Hz AC Optional 7.5 Amps, 230 V, 50 Hz	15 Amps, 115 V, 60 Hz AC Optional 15 Amps, 115 V, 50 Hz; 7.5 Amps, 230 V, 60 Hz; or 7.5 Amps, 230 V, 50 Hz	15 amps, 115 V, 60 Hz AC Optional 15 Amps, 115 V, 50 Hz; 7.5 Amps, 230 V, 60 Hz; or 7.5 Amps, 230 V, 50 Hz	
Power Supply Cord:	37', 14-3 GFCI	37', 14-3 GFCI	37', 14-3 GFCI	
Air Requirements:				Minimum 80 PSI at 75 CFM
Water Requirements:	Minimum 25 PSI at 2 GPM	Minimum 25 PSI at 3 GPM	Minimum 25 PSI at 2 GPM	Minimum 25 PSI at 3 GPM
Output Water Pressure:	Adjustable, Up to 1,200 PSI	1,000 PSI	Adjustable, Up to 1,400 PSI	1,000 PSI
Output Water Flow:	1.8 GPM	2.2 GPM	1.7 GPM	2.2 GPM
Pump:	Triplex Oil Bath Plunger	Twin-Piston Cast Iron	Triplex Ceramic Oil Bath Plunger	Twin-Piston Cast Iron
Hose:	25' Steel Reinforced	25' Steel Reinforced	25' Steel Reinforced	50' Steel Reinforced
Hose Reel:			Standard	
Wand:	3' Stainless Steel	3' Stainless Steel	3' Stainless Steel	3' Stainless Steel
Nozzle(s):	Variable Pressure	Five Quick Connect	Variable Pressure	Five Quick Connect
Chemical Injector:	Downstream	Downstream		Downstream
Chemical Tank:	Additional	2½ Gallons, External		2½ Gallons, External
Special Features:	Hand Carried		Optional Drain Cleaner Kit	Air Powered
Dimensions:	10½" High x 15" Wide x 9" Deep	37" High x 20" Wide x 17" Deep	40" High x 14" Wide x 21" Deep	37" High x 20" Wide x 17" Deep
Weight:	41 Lbs, Net Dry	83 Lbs, Net Dry	95 Lbs, Net Dry	67 Lbs, Net Dry
Accessories/Prices:	See Page 90	See Page 91	See Page 92	See Page 93

GPW-4000-G	HPW-1000-E	HPW-2600-G	HPW-3500-G
13 HP Honda	1½ HP	6½ HP Briggs & Stratton	13 HP Honda
	17 amps, 115 V, 60 Hz AC		
	35', 12-3 GFCI		
Minimum 25 PSI at 5 GPM	Minimum 25 PSI at 3 GPM	Minimum 25 PSI at 3 GPM	Minimum 25 PSI at 4 GPM
4,000 PSI	1,000 PSI	2,600 PSI	3,500 PSI
4 GPM	2.3 GPM	2.3 GPM	3.8 GPM
Triplex Oil Bath Plunger	Triplex Oil Bath Plunger	Triplex Oil Bath Plunger	Triplex Oil Bath Plunger
50' Steel Reinforced	50' Steel Reinforced	50' Steel Reinforced	50' Steel Reinforced
4' Plated Steel	3' Plated Steel	3' Plated Steel	4' Plated Steel
Five Quick Connect	Four Quick Connect	Four Quick Connect	Four Quick Connect
Downstream	Downstream	Downstream	Downstream
	Optional 2½ Gallons, External	Optional 2½ Gallons, External	Optional 2½ Gallons, External
Gasoline Powered	Hot Water/Diesel Burner	Gasoline Powered	Gasoline Powered
		Hot Water/Diesel Burner	Hot Water/Diesel Burner
42" High x 27" Wide x 37" Deep	38" High x 25" Wide x 36" Deep	40" High x 28" Wide x 41" Deep	44" High x 29" Wide x 43" Deep
140 Lbs, Net Dry	350 Lbs, Net Dry	340 Lbs, Net Dry	488 Lbs, Net Dry
See Page 94	See Page 95	See Page 96	See Page 97



GPW-1200



GPW-1000



GPW-1400



GPW-4000-G



HPW-1000-E



HPW-3500-G

For Sales Call: +1-203-359-4708
Fax: +1-203-359-9601

www.goodway.com

Portable Pressure Washer

GPW-1200

1,200 PSI at 1.8 GPM

Compact yet heavy-duty, the GPW-1200 Portable Pressure

Washer is designed to be carried easily up ladders and into tight locations. The unit is ideal for a wide range of applications, from cleaning cooling towers to delicate air conditioning coils on rooftops.

Features – Benefits

- Stainless steel construction – Long life**
- Steel reinforced hose – Rugged**
- Stainless steel wand – Durable**
- Compact – Easy to carry**
- Variable pressure nozzle – Matches application**
- Can use hot water – Additional cleaning power**
- Soap siphon tube – Easy injection of chemicals**



CE

TechTip

Choosing A Pressure Washer

Every application requires a certain amount of pressure to break the bond between “dirt” and the surface it is adhered to. Using pressures greater than 20% over the minimum required to break the bond will not improve the cleaning speed of the equipment. However, once the bond breaking pressure is reached, increasing the flow will decrease the cleaning time.

For example, compare the GPW-1000 to the GPW-1400 (see pages 91 and 92). If the application is to remove grease from a piece of machinery, we know

that the deposit is soft and not firmly adhered to the surface. Assuming that bond breaking pressure is 800 PSI, the GPW-1000 would be the better choice. The GPW-1000 would clean the equipment faster because of its higher flow. The additional 400 PSI of the GPW-1400 is doing nothing to increase the cleaning speed of the unit.

Seeking higher and higher pressure ratings when choosing a pressure washer may not give you the best results. Remember, Goodway Sales Professionals are always ready to help you in selecting the right equipment.



Specifications

Motor Power: 1.7 HP
Input Power: 15 amps, 115 V, 60 Hz AC

(Optional: 7.5 amps, 230 V, 50 Hz)

Output Water Pressure: 1,200 PSI at 1.8 GPM

Pump: Triplex plunger running in oil bath
Dimensions: 10½" high x 15" wide x 9" deep
Weight: 41 lbs net dry

GPW-1200-60 Portable Pressure Washer, 1.7 HP, 115 V, 60 Hz, including 3' wand, 25' high pressure hose, variable pressure nozzle and soap injector

Note: See pages 98-99 for accessories.

Heavy-Duty Pressure Washer

GPW-1000

1,000 PSI at 2.2 GPM

The GPW-1000 Heavy-Duty Pressure Washer replaces inefficient cleaning methods with **economical** pressure washing. The unit saves labor, decreases downtime and reduces costs. Its durable construction will provide years of dependable performance. Designed for easy handling, transport and storage, it is the best compact pressure washer in its class.

Features — Benefits

- Stainless steel construction — Long life**
- Steel reinforced hose — Rugged**
- Stainless steel wand — Durable**
- Five quick connect nozzles — Matches application**
- Can use hot water — Additional cleaning power**
- Soap container — Easy injection of chemicals**

**OUR MOST POPULAR
PRESSURE WASHER!**



**AUTOMATIC
SHUT-OFF
AVAILABLE**

CE

Specific Models Only

**Three-Year
Limited Warranty**

Specifications

- Motor Power:** 1½ HP
- Input Power:** 15 amps, 115 V, 60 Hz AC
(Optional: 15 amps, 115 V, 50 Hz;
7.5 amps, 230 V, 60 Hz; or
7.5 amps, 230 V, 50 Hz)
- Output Water Pressure:** 1,000 PSI at 2.2 GPM
- Pump:** Twin-piston cast iron
- Dimensions:** 37" high x 20" wide x 17" deep
- Weight:** 83 lbs net dry

GPW-1000-60 Heavy-Duty Pressure Washer, 1½ HP, 115 V, 60 Hz, including 3' wand, 25' high pressure hose, five quick connect nozzles, soap container and dolly

Note: See pages 98-99 for accessories.



www.goodway.com

**For Sales Call: +1-203-359-4708
Fax: +1-203-359-9601**

Heavy-Duty Pressure Washer

GPW-1400

Up to 1,400 PSI at 1.7 GPM

The GPW-1400 Heavy-Duty Pressure Washer is one of our most **versatile** units. Not only can it be used to cover a wide range of applications as a traditional pressure washer, but with its pressure regulator and pulse control, it can be easily converted into a powerful Pulse-Jetter Drain Cleaner.

**Three-Year
Limited Warranty**

Features – Benefits

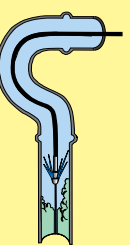
Pressure regulator – Adjust the PSI to fit the application
Pulse control – Additional cleaning force when used as a drain cleaner
Heavy-duty construction – Long life
Steel reinforced hose – Rugged
Stainless steel wand – Durable
Variable pressure nozzle – Matches application
Can use hot water – Additional cleaning power
Locking casters – Prevents rolling

Specifications

Motor Power: 1 1/2 HP
Input Power: 15 amps, 115 V, 60 Hz AC
(Optional: 15 amps, 115 V, 50 Hz;
7.5 amps, 230 V, 60 Hz; or
7.5 amps, 230 V, 50 Hz)
Output Water Pressure: Up to
1,400 PSI at 1.7 GPM
Pump: Triplex ceramic plunger
running in oil bath
Dimensions: 40" high x 14" wide x
21" deep
Weight: 95 lbs net dry



GPW-1400-60 Heavy-Duty Pressure Washer, 1 1/2 HP, 115 V, 60 Hz, including 3' wand, reel, 25' high pressure hose, variable pressure nozzle and cart
Drain Cleaner Kit Converts GPW-1400 into a 1,400 PSI Drain Cleaner.
GPW-PJ-KIT Drain Cleaner Conversion Kit 3/4" x 60' high pressure hose and three jetter nozzles



For primary use as a drain cleaner see page 87.

Note: See pages 98-99 for accessories.

Air Powered Pressure Washer

GPW-1000-P

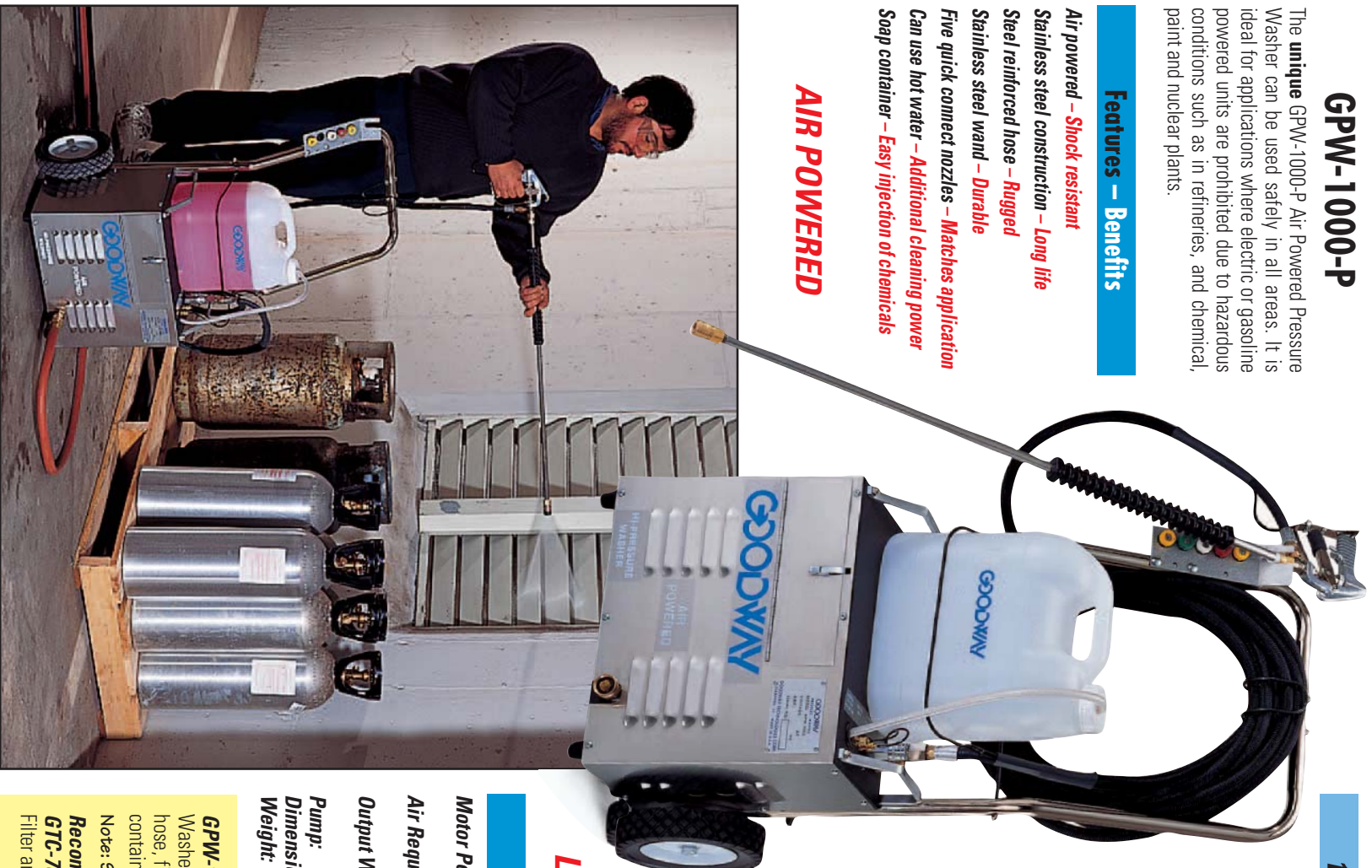
1,000 PSI at 2.2 GPM

The **unique** GPW-1000-P Air Powered Pressure Washer can be used safely in all areas. It is ideal for applications where electric or gasoline powered units are prohibited due to hazardous conditions such as in refineries, and chemical, paint and nuclear plants.

Features – Benefits

- Air powered – Shock resistant**
- Stainless steel construction – Long life**
- Steel reinforced hose – Rugged**
- Stainless steel wand – Durable**
- Five quick connect nozzles – Matches application**
- Can use hot water – Additional cleaning power**
- Soap container – Easy injection of chemicals**

AIR POWERED



**AUTOMATIC
SHUT-OFF
INCLUDED**

CE

**Three-Year
Limited Warranty**

Specifications

- Motor Power:** Up to 2 1/2 HP depending on air pressure and volume
- Air Requirements:** Minimum 80 PSI at 75 CFM, Maximum 100 PSI at 85 CFM
- Output Water Pressure:** 1,000 PSI at 2.2 GPM
- Pump:** Twin-piston cast iron
- Dimensions:** 37" high x 20" wide x 17" deep
- Weight:** 67 lbs net dry
- GPW-1000P-50** Air Powered Pressure Washer, including 3' wand, 50' high pressure hose, five quick connect nozzles, soap container and dolly
- Note:** See pages 98-99 for accessories.
- Recommended:** GTC-705-4 Combination Air Lubricator, Filter and Regulator (see page 27)

For Sales Call: +1-203-359-4708
Fax: +1-203-359-9601

Gasoline Powered Pressure Washer

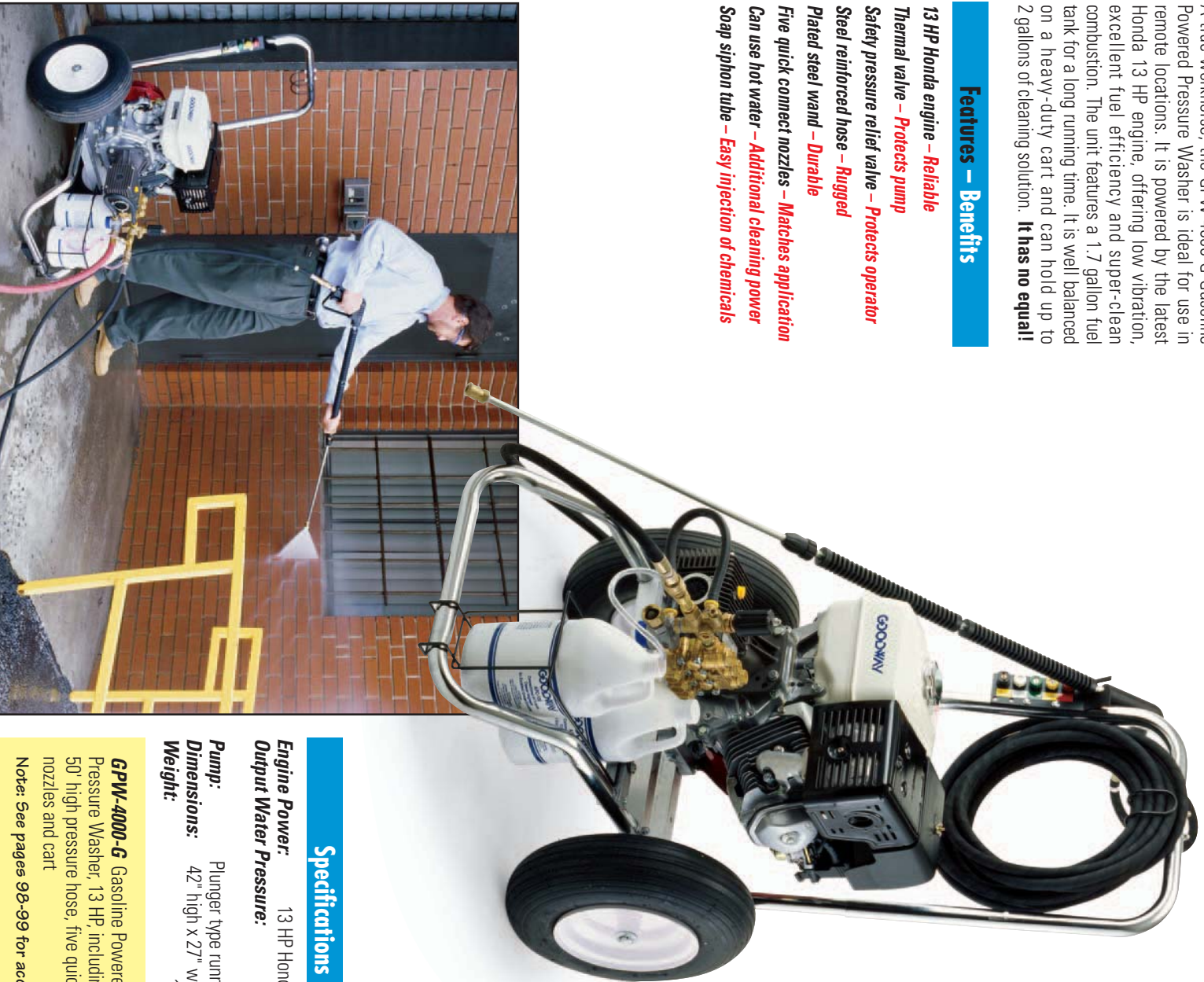
GPW-4000-G

4,000 PSI at 4 GPM

A true workhorse, the GPW-4000-G Gasoline Powered Pressure Washer is ideal for use in remote locations. It is powered by the latest Honda 13 HP engine, offering low vibration, excellent fuel efficiency and super-clean combustion. The unit features a 1.7 gallon fuel tank for a long running time. It is well balanced on a heavy-duty cart and can hold up to 2 gallons of cleaning solution. **It has no equal!**

Features — Benefits

13 HP Honda engine — Reliable
Thermal valve — Protects pump
Safety pressure relief valve — Protects operator
Steel reinforced hose — Rugged
Plated steel wand — Durable
Five quick connect nozzles — Matches application
Can use hot water — Additional cleaning power
Soap siphon tube — Easy injection of chemicals



Specifications

Engine Power: 13 HP Honda, recoil start
Output Water Pressure: 4,000 PSI at 4 GPM
Pump: Plunger type running in oil bath
Dimensions: 42" high x 27" wide x 37" deep
Weight: 140 lbs net dry

GPW-4000-G Gasoline Powered Pressure Washer, 13 HP, including 4' wand, 50' high pressure hose, five quick connect nozzles and cart

Note: See pages 98-99 for accessories.

COLD WATER PRESSURE WASHERS

Electric Powered Hot Water Pressure Washer

HPW-1000-E/HPW-2000-E

When you need **extra cleaning power**, the HPW-1000-E and HPW-2000-E Hot Water Pressure Washers provide it with heat. Each unit comes equipped with a plated steel wand, a soap injector and four quick connect nozzles. Both machines are powered by an electric motor. The HPW-1000-E heats water to 170°F and the HPW-2000-E heats water to 185°F through a Beckett diesel burner.

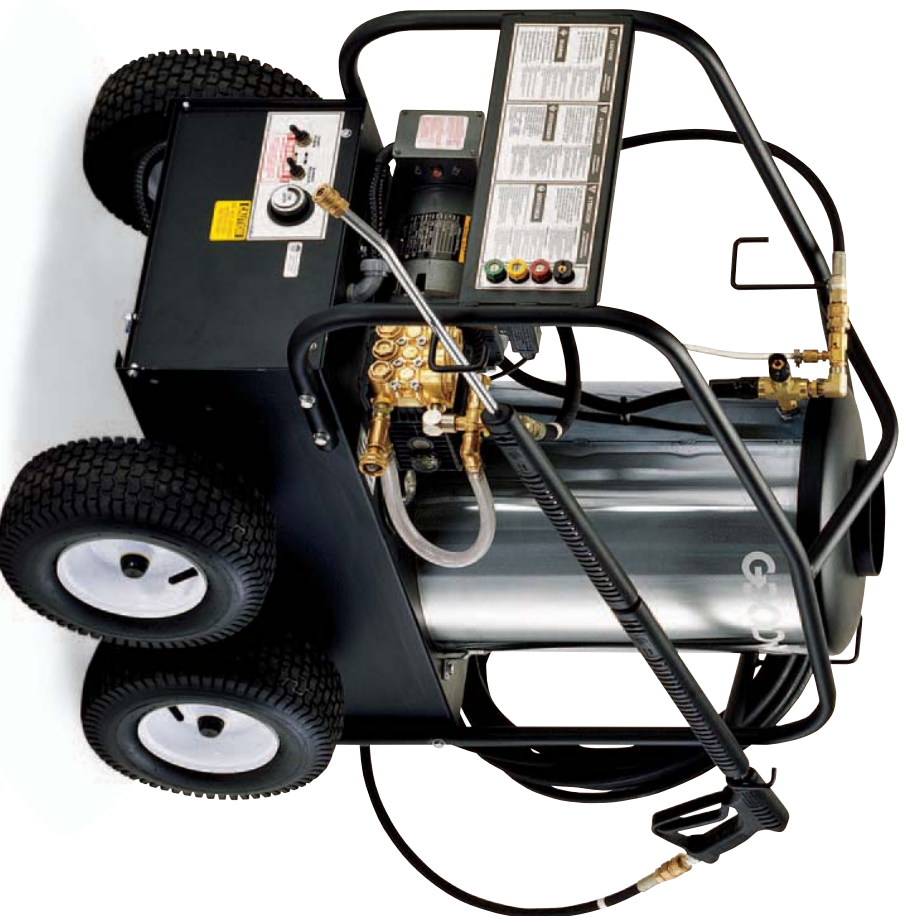
Features — Benefits

- Steel construction — Long life**
- Steel reinforced hose — Rugged**
- Plated steel wand — Durable**
- Four quick connect nozzles — Matches application**
- Heats water — Additional cleaning power**
- Thermostat — Temperature control**
- Soap siphon tube — Easy injection of chemicals**

Specifications

Motor Power:	1½ HP
HPW-1000-E:	5 HP
HPW-2000-E:	
Input Power:	
HPW-1000-E:	17 amps, 115 V, 60 Hz AC,
	single phase
HPW-2000-E:	27 amps, 230 V, 60 Hz AC,
	single phase
Output Water Pressure:	
HPW-1000-E:	1,000 PSI at 2 GPM
HPW-2000-E:	2,000 PSI at 3.5 GPM
Pump:	Triplex ceramic plunger running in oil bath
Dimensions:	
HPW-1000-E:	36" high x 25" wide x 38" deep
HPW-2000-E:	41" high x 27" wide x 42" deep
Weight:	
HPW-1000-E:	350 lbs net dry
HPW-2000-E:	385 lbs net dry

**Three-Year
Limited Warranty
(One-Year Limited
Warranty on Motor)**



1,000 PSI at 2 GPM

2,000 PSI at 3.5 GPM



HPW-1000-E Electric Powered Hot Water Pressure Washer with diesel burner, 1½ HP, 115 V, 60 Hz, single phase, including 3' wand, 50' high pressure hose, four quick connect nozzles, soap injector and cart

HPW-2000-E Electric Powered Hot Water Pressure Washer with diesel burner, 5 HP, 230 V, 60 Hz, single phase, including 3' wand, 50' high pressure hose, four quick connect nozzles, soap injector and cart

Note: See pages 98-99 for accessories.

For Sales Call: +1-203-359-4708
Fax: +1-203-359-9601

Gasoline Powered Hot Water Pressure Washer

HPW-2600-G

2,600 PSI at 2.3 GPM

The HPW-2600-G Hot Water Pressure Washer will handle **difficult applications** with ease. Caked-on grease, hardened chewing gum, mold and mildew, and other heavy grime are quickly removed from any surface. The unit comes equipped with a plated steel wand, a soap injector and three quick connect nozzles. It is powered by the latest Briggs & Stratton 6.5 HP Intek Pro engine and heats water to 180°F through a Beckett diesel burner.

Features – Benefits

Steel construction – Long life
6.5 HP Briggs & Stratton engine – Reliable
Low oil cutoff – Protects engine
Steel reinforced hose – Rugged
Plated steel wand – Durable
Four quick connect nozzles – Matches application
Heats water – Additional cleaning power
Thermostat – Temperature control
Soap siphon tube – Easy injection of chemicals

**Three-Year
Limited Warranty
(One-Year Limited
Warranty on Engine)**



Specifications

Engine Power: 6.5 HP Briggs & Stratton
Intek Pro engine
Output Water Pressure: 2,600 PSI at
2.3 GPM
Pump: Triplex plunger running in oil bath
Dimensions: 40" high x 28" wide x 41" deep
Weight: 340 lbs net dry

HPW-2600-G Heavy-Duty Gasoline Powered Hot Water Pressure Washer with diesel burner, 6.5 HP, including 4' wand, 50' high pressure hose, four quick connect nozzles, soap injector and cart

Note: Battery to run burner not included.

Note: See pages 98-99 for accessories.



Gasoline Powered Hot Water Pressure Washer

HPW-3500-G

3,500 PSI at 3.8 GPM

The HPW-3500-G Hot Water Pressure Washer is Goodway's **most powerful** hot water unit. It is designed to tackle even the toughest applications. The unit comes equipped with a plated steel wand, a soap injector and four quick connect nozzles. It is powered by the latest Honda 13 HP engine and heats water up to 200°F through a Beckett diesel burner.

Features – Benefits

Steel construction – Long life
13 HP Honda engine – Reliable
Electric start – Easy operation
Low oil cutoff – Protects engine
Steel reinforced hose – Rugged
Plated steel wand – Durable
Four quick connect nozzles – Matches application
Heats water – Additional cleaning power
Thermostat – Temperature control
Soap siphon tube – Easy injection of chemicals

**Three-Year
 Limited Warranty
 (One-Year Limited
 Warranty on Engine)**



Specifications

Engine Power: 13 HP Honda engine, electric start
Output Water Pressure: 3,500 PSI at 3.8 GPM
Pump: Triplex plunger running in oil bath
Dimensions: 44" high x 29" wide x 43" deep
Weight: 488 lbs net dry

HPW-3500-G Heavy-Duty Gasoline Powered Hot Water Pressure Washer with diesel burner, 13 HP, including 4' wand, 50' high pressure hose, four quick connect nozzles, soap injector and cart
Note: Battery to start engine and run burner not included.
Note: See pages 98-99 for accessories.



For Sales Call: +1-203-359-4708
Fax: +1-203-359-9601

Hoses, Cleaner and Nozzles

Hoses

Extension Hoses (For all models except GPM-1000-P) Optional High Pressure Extension Hose with quick connect fittings.

HPH-25E High Pressure Extension Hose 25' for GPM units (except GPM-1200, GPM-1400 and GPM-4000-G)

1024-25-1200 High Pressure Extension Hose 25' for GPM-1200 and GPM-1400

9528 High Pressure Extension Hose 50' for GPM-4000-G and HPW units

Water Supply Hoses (For all models) This 50' water supply hose is made of top grade abrasion resistant rubber and heavy-duty machined brass fittings. It will stay flexible to -25°F. and provides higher waterflow than conventional 1/2" I.D. hoses.

WSH-R50 Red Rubber Water Supply Hose 5/8" x 50'

Cleaner

All Purpose Cleaner (For all models) An excellent biodegradable grease emulsifier, Goodway's APC-100 All Purpose Cleaner is specifically designed to be used with pressure washers.

APC-100-6 All Purpose Cleaner, case of six 1 gallon bottles

Nozzles

Quick Connect Nozzles (For all models except GPM-1200 and GPM-1400) Quick Connect Nozzles permit rapid nozzle changes without use of tools.

All Quick Connect Nozzles

Note: When placing order, specify nozzle spray pattern (0°, 15°, 25° or 40° cleaning, or 25° soap application) and machine (i.e. .15" cleaning nozzle for GPM-3000-G).

Multi-Jet Nozzle (For GPM-1000 and GPM-1000-P) The PMN-002 Multi-Jet Nozzle has four spray patterns: 0° solid jet for concentrated cleaning, 15° flat spray for general cleaning, 40° flat spray for large area cleaning, and 15° low pressure for soap application. Simply turn nozzle to desired spray. Delivers 800 PSI maximum pressure.

PMN-002 Multi-Jet Nozzle

Variable Spray Nozzle (For GPM-1000 and GPM-1000-P) This standard thread nozzle allows the user to adjust the pressure to suit the cleaning job, 150-1,000 PSI.

1027 Variable Spray Nozzle

Turbo Nozzles (For GPM-4000-G) This unique nozzle gives the impact force of a pinpoint nozzle with the coverage of a fan nozzle. It greatly increase the productivity of the washer.

PWNT-00040 Turbo Nozzle for GPM-4000-G

Universal Swivel Fitting (For all models except HPW units) The Universal Swivel Fitting attaches to end of wand to adapt nozzles for spraying at angles.

USF-001 Universal Swivel Fitting

USF-001Q Universal Swivel Fitting with quick connect fitting



TechTip

Choosing A Pressure Washer Nozzle

The key to using a pressure washer is having the right nozzle. As far as spray patterns go, the more concentrated the pattern, the greater the impact, producing more cleaning power.

A pinpoint nozzle delivers the most cleaning power, but covers a small area. It is useful for small cleaning jobs that require greater impact such as removing chewing gum from sidewalks.

A 40° flat spray nozzle provides less impact but gives greater coverage. It is useful for cleaning large areas such as walls and parking lots. The 15° and 25° nozzles give combinations of impact and coverage that lie in between the other two.

The Turbo Nozzle uses a pinpoint nozzle mounted at an angle on a spinning disk. As the disc spins, the water stream rotates to form a fan-like spray. This spreads the concentrated cleaning power over a larger area and speeds up the job. Turbo Nozzles are used on machines that deliver at least 2,000 PSI. Proper nozzle selection is important for getting the most out of your washer. If you need help, call us. We will be happy to help you select the nozzle to match your application.

Wands and Attachments

Wands

Extension Wands [For all models – GPW-1200 and GPW-1400 require a ODN-F42 Adapter (\$17.00)] Extension Wands with quick connect fittings.

9655 Extension Wand, 18"

9656 Extension Wand, 24"

9657 Extension Wand, 36"

9658 Extension Wand, 48"

9659 Extension Wand, 60"

Telescoping Wand [For all models except GPW-1000-P and HPW units]

The GPW-TW-18 Telescoping Wand extends the user's reach from 6'-18'.

It is lightweight and easy to use, and permits overhead cleaning without the need for ladders or scaffolds. The wand is fitted with quick connect couplings for use with all ODN series nozzles and the HPH-25E High

Pressure Extension Hose.

GPW-TW-18 Telescoping Wand

Attachments

Foam Injector [For all models except GPW-4000-G and HPW units] The

GPW-FI Foam Injector attaches to the end of the wand. It allows the user to apply soap in the form of a thick foam. By applying soap in this manner, the soap clings to surfaces longer for better cleaning. The Foam Injector comes equipped with its own dip tube and on/off valve to control soap application.

GPW-FI Foam Injector

Power Brush Assembly [For GPW-4000-G] This 7" diameter nylon brush

attaches to end of the wand to allow wet scrubbing action. It is used for removing statically bonded road grime and other stubbornly adhered dirt. Excellent for cleaning vehicles and other surfaces. Brush rotates when the wand trigger is pulled.

PBA-700 Power Brush Assembly

Sand Blaster [For GPW-4000-G] The GPW-SBA-40 Sand Blasting

Attachment allows the user to convert the GPW-4000-G Pressure Washer into a wet sand blasting machine. Wet sand blasting is an excellent way to clean and prepare any surface for painting, plating or other coatings. It removes rust, flaked paint, and graffiti quickly and easily without creating the dust associated with dry sand blasting. The operator simply connects the sand blasting attachment to the pressure washer spray gun, places the pick-up tube into sand supply, pulls trigger and blasts.

GPW-SBA-40 Sand Blasting Attachment for GPW-4000-G

Drain/Pipe Cleaner [For all models except, GPW-1000-P and HPW units]

The Drain/Pipe Cleaner consists of a hose with a quick connect, and nozzle which is sized to the pressure washer. They are used for clearing blockages in pipes 1½"-6" I.D. The ⅝" stainless steel nozzle, which is screwed on to the end of the hose, has one 0° pinpoint jet and several 45° propelling jets.

When the assembly is connected to a Goodway Pressure Washer, the nozzle is self-propelled through pipes and ordinary drain systems. Available in three lengths and for four pressure ratings.

TE30-HOSE 30' Drain/Pipe Cleaner Hose

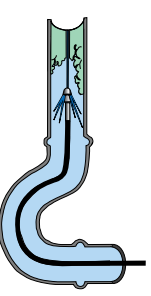
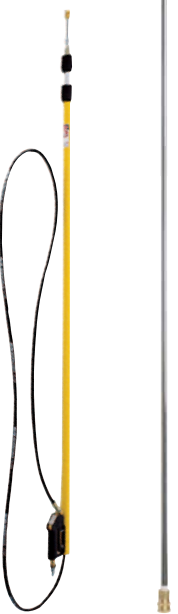
TE60-HOSE 60' Drain/Pipe Cleaner Hose

TE100-HOSE 100' Drain/Pipe Cleaner Hose

TEN-1000 Drain/Pipe Cleaner Nozzle for GPW-1000

TEN-2000 Drain/Pipe Cleaner Nozzle for GPW-4000-G

TEN-2500 Drain/Pipe Cleaner Nozzle for GPW-1200



Note: Drain/Pipe Cleaner requires both a hose and a nozzle.

For Sales Call: +1-203-359-4708
Fax: +1-203-359-9601