



Field Machine Tools Pty Ltd

ABN 48 097 691 748

1/26 Shearson Crescent

Mentone VIC 3194

www.fmt.com.au

sales@fmt.com.au

Ph: 1300 FMT FMT Fx: 03 9585 7355

International

Ph: 617 3267 6844 Fx: 617 3267 8244

H&S
TOOL, INC.



JTL Lathe

Specifications

Working Range

- JTL-8**
- 4" (100mm) to 8" (203mm)
 - 25" (635mm) Travel
 - 38.5" (978mm) overall length
 - 21.5" (546mm) overall OS Dia.

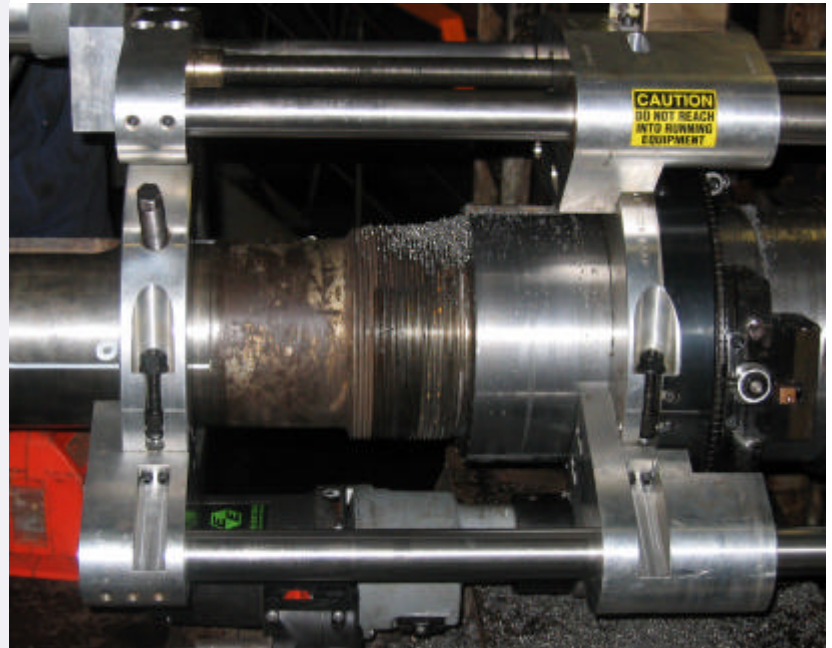
- JTL-20**
- 14" (355mm) to 20" (520mm)
 - 32" (812mm) Travel
 - 48" (1219mm) overall length
 - 39.5" (1003mm) overall OS Dia

Electric Motor

- 220 V, variable speed
- Reversible

Feed Mechanism

- Variable speed servo drive
- Reversible
- Manual override.



Description

The DL Ricci JTL Lathes are an affordable alternative to major equipment disassembly. It is a field proven machine for turning bearing journals and other round surfaces, in situ, accurately. The Journal Turning Lathe can be positioned in tight areas that need repair.

The Journal Turning Lathe requires minimal operating clearance and the ease of set-up is realised with the light weight design and fully adjustable jacking screws.

Accurate cutting tolerances and exacting surface finishes are achieved through the rigid bearing system and rugged design with the electric servo control providing a smooth cutting performance. The unique time saving design delivers superior performance and maximum results.