

TMF Tube Pulling Systems

2/471 Tufnell Rd Banyo QLD 4014 Ph +61 7 3267 6844 Fax +61 7 3267 8244

Web Site: www.winema.com.au

Email: winema@winema.com.au

Continuous Automatic Tube Pulling System

TMF Tube Pullers manufacture a range of tube pulling machines for high speed removal of tubes from heat exchangers condensers and boilers. The hollow rod cylinder uses a collet system that grips the pulling mandrel and subsequently the tube for continuous pulling rates of up to 5 metres per minute. When the pulling cylinder reaches the end of its travel it automatically retracts at increased speed for the next cycle.



The puller can be purchased with or without trolley. The hydraulic power unit is removable from the trolley and the Pulling gun rests in cradle on the trolley

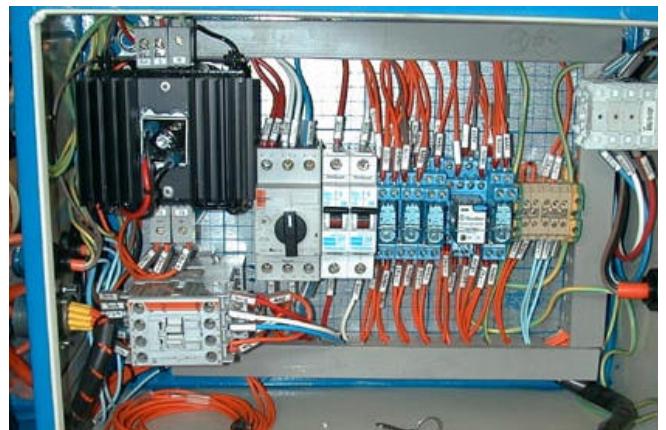
The pulling cylinder is fitted with bridle for use with spring balancer. Specify vertical or horizontal application.

The improved Hydraulic circuit uses fewer components which results in reduced heat generation and ease of service.

There are 2 versions available, 3 phase electric and pneumatic.

The Improved electrical circuits ensure reliability, and allow for easy service diagnostics.

The electrical console is sealed from harsh environment in lockable cabinet separate from HPU tank



All control functions are 24-Volt remote pendant on 6-meter cable

Functions


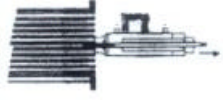
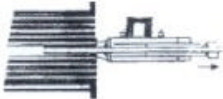
- Pull / Jog
- Retract / Jog
- Pull / Automatic



Continuous Rapid Cycle Tube Pulling System

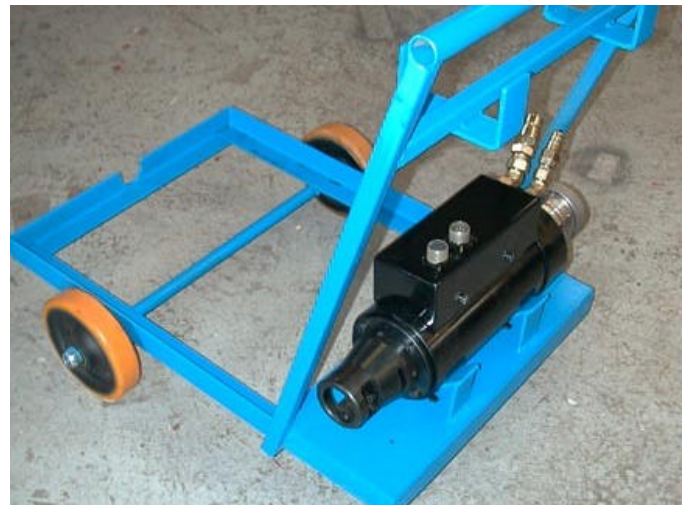


Tube Pulling process

<p>Step 1 The pulling mandrel is driven into the tube end using an impact wrench.</p>	
<p>Step 2 The tube pulling gun is loaded onto the mandrel and the pull button is pressed on the pendant control.</p>	
<p>Step 3 The gun then pulls the tube from the tube sheet until the tube is extracted from the tube sheet.</p>	

Specifications

15 Ton Tube Puller	
Capacity	10 mm to 25 mm
Pulling Speed	Max 5 m/minute
Pulling Force	15,000 kg
Weight	29 kg
Stroke	125 mm
30 Ton Tube Puller	
Capacity	10 mm to 38 mm
Pulling Speed	Max 4 m/minute
Pulling Force	30,000 kg
Weight	29 kg
Stroke	150 mm
45 Ton Tube Puller	
Capacity	25 mm to 7625 mm
Pulling Speed	Max 2 m/minute
Pulling Force	45,000 kg
Weight	29 kg
Stroke	75 mm



Consumables

As with every tube pulling system there are a number of consumables required when using the TMF Tube Pullers. The quantity of consumables required is dependant on a number of factors which include tube material, environment, condition of tube etc. TMF consumables are manufactured from the best materials available and heat treated for longer life.

Consumables Include

- Pulling Mandrels** Self tapping mandrels that are screwed into the tube and allow the pulling gun to begin the tube pulling process
- Pulling Jaws** Grip the mandrel and then the tube as the tube is extracted.
- Holding Jaws** Ensures the pulling gun stays against the tube sheet as the tube is extracted.
- Front Collar** Ensures the pulling action is square to the tube sheet.